

**CIRBP Antibody**  
**Rabbit mAb**  
**Catalog # AP92642**

## Specification

---

### CIRBP Antibody - Product Information

Application	WB, IHC, ICC, IP
Primary Accession	<a href="#">Q14011</a>
Clonality	Monoclonal
<b>Other Names</b>	
A18HNRNP; cirbp; CIRP; Cold inducible RNA binding protein;	
Isotype	Rabbit IgG
Host	Rabbit
Calculated MW	18648 Da

### CIRBP Antibody - Additional Information

Dilution	WB~~1:1000 IHC~~1:100~500 ICC~~N/A IP~~N/A
Purification	Affinity-chromatography
Immunogen	A synthesized peptide derived from CIRBP
Description	Cold-inducible mRNA binding protein that plays a protective role in the genotoxic stress response by stabilizing transcripts of genes involved in cell survival. Acts as a translational activator.
Storage Condition and Buffer	Rabbit IgG in phosphate buffered saline , pH 7.4, 150mM NaCl, 0.02% sodium azide and 50% glycerol. Store at +4°C short term. Store at -20°C long term. Avoid freeze / thaw cycle.

### CIRBP Antibody - Protein Information

**Name** CIRBP

**Synonyms** A18HNRNP, CIRP

#### Function

Cold-inducible mRNA binding protein that plays a protective role in the genotoxic stress response by stabilizing transcripts of genes involved in cell survival. Acts as a translational activator. Seems to play an essential role in cold-induced suppression of cell proliferation. Binds specifically to the 3'-untranslated regions (3'-UTRs) of stress-responsive transcripts RPA2 and TXN. Acts as a translational repressor (By similarity). Promotes assembly of stress granules (SGs), when overexpressed.

**Cellular Location**

Nucleus, nucleoplasm. Cytoplasm Note=Translocates from the nucleus to the cytoplasm after exposure to UV radiation. Translocates from the nucleus to the cytoplasm into stress granules upon various cytoplasmic stresses, such as osmotic and heat shocks. Its recruitment into stress granules occurs in the absence of TIAR proteins (By similarity).

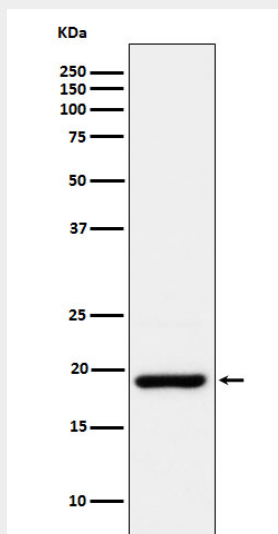
**Tissue Location**

Ubiquitous.

**CIRBP Antibody - Protocols**

Provided below are standard protocols that you may find useful for product applications.

- [Western Blot](#)
- [Blocking Peptides](#)
- [Dot Blot](#)
- [Immunohistochemistry](#)
- [Immunofluorescence](#)
- [Immunoprecipitation](#)
- [Flow Cytometry](#)
- [Cell Culture](#)

**CIRBP Antibody - Images**

Western blot analysis of CIRBP expression in HepG2 cell lysate.